



MCR0X Ethernet Readers

ISO14443 MIFARE®

User Manual

Okt. 2020 Rev 3.1

Minova Technology GmbH

Company Headquarters
Auf dem Wall 29
78628 Rottweil
Germany

www.minovatech.de

The information contained herein is provided solely for the purpose of allowing customers to operate and service Minova manufactured equipment and is not to be released, reproduced, or used for any other purpose without written permission of Minova Technology. Information and specifications contained in this document are subject to change without prior notice and do not represent a commitment on the part of Minova Technology.

© 2020 by Minova Technology GmbH. All rights reserved.

Revision History

Changes of this document are listed below:

Date	Revision	Note
12.05.2020	3.0	Third release
10.10.2020	3.1	Added T=CL protocol and APDU command

Table of Contents

1	Precautions Before Setup & First Run.....	5
2	Introduction.....	6
3	Features	6
3.1	Electrical Specifications	6
3.2	MCR04G Mechanical View & Dimensions.....	7
3.3	Powering the MCR04G Reader.....	8
3.4	MCR04 Mechanical View & Dimensions	9
3.5	MCR02 Mechanical View & Dimensions	10
3.6	Powering the MCR02/04 Reader	11
3.7	Standard Configuration	11
3.8	Ethernet Powered (Passive PoE-Injector)	11
3.9	Ethernet Powered (Active PoE-Splitter)	12
3.10	Possible Device Alternatives.....	13
4	Operating Modes & Setup	14
4.1	Server & Client Protocols	14
4.1.1	TCP/IP Client Mode Operation.....	14
4.1.2	TCP/IP Server Mode Operation	14
4.2	Terminal Setup & Settings	14
4.3	miFinder Configuration Software	15
4.3.1	Automatic IP (DHCP) Mode.....	17
4.3.2	Constant / Static IP Mode.....	17
4.3.3	Client and Web Client Modes of Operation.....	18
4.3.4	BLOCK/SECTOR Auto-Read	18
4.3.5	Message Formats from Server to Terminal.....	19
4.3.6	Example Operation.....	20
4.3.7	Offline Mode of Operation.....	21
4.3.8	Offline examples	22
4.4	Loading MIFARE Keys	23
	<i>MIFARE Card Memory Layout</i>	23
	<i>Formatting mifare® Sectors</i>	23
	<i>Reading/Writing mifare® Blocks</i>	23
5	Test Connection with Hercules.....	24
6	Example Operation with GSA.....	25
7	Firmware Update (MCR02/04 only).....	26
7.1	Firmware Update via Ethernet	26
7.2	Firmware Update via RS232	27
7.2.1	Requirements.....	27
7.2.2	Update Sequence	27
7.2.3	Firmware Recovery via USB-Adapter	27

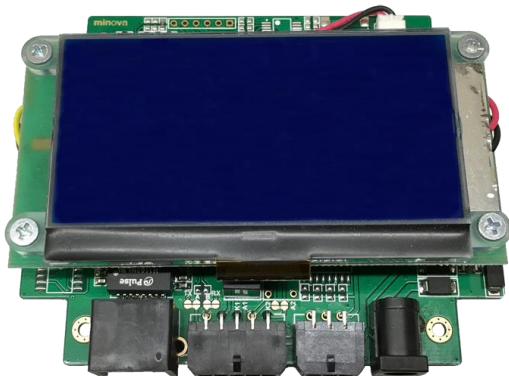
1 Precautions Before Setup & First Run

- **If your network contains managed/smart switches such as (Cisco, Allied Telesis etc.)**
 - RSTP, STP (Spanning Tree Protocols) and related protocols must be turned off or disabled from the management console of the switch. These protocols may cause the terminals to start to gain ip late at first power-on or unable to take an IP address on the network properly.

- **If your network contains a Firewall**
 - Make sure that your network does not have a MAC-Filter.
 - Make sure that UDP 65535 port (terminal discover port i.e miFinder Config) should not be blocked.
 - If your device is unable to gain an IP address from the DHCP server, please define or give freedom to the MAC ID of the terminal in your network (via management console of firewall, router etc.)
 - Make also sure that TCP ports used by the terminal should not be blocked.

2 Introduction

MCR02



MCR04



MCR series are high performance and flexible ISO14443-A OEM contactless smart card readers supporting read-write capabilities. The readers are based on the 13.56 MHz contactless technology and are fully compatible with the entire MIFARE® family, as well as supporting ISO14443A contactless standard. The readers come with Ethernet connectivity and have extensive software support package that is optimized for easy integration.

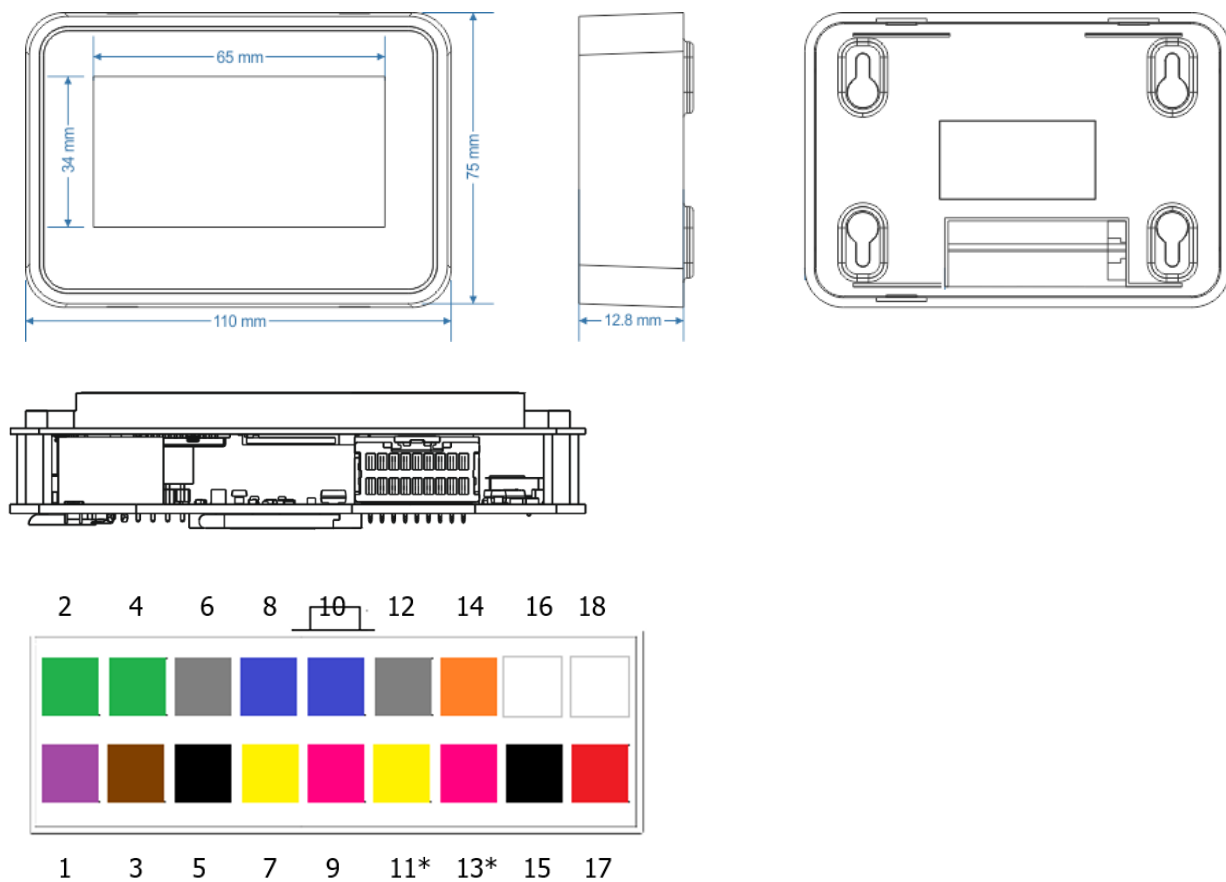
3 Features

- ISO14443 & Mifare Support
- Ethernet 10/100BaseT Full Duplex
- Integrated TCP/IP Stack
- TCP/IP Client-Server Connection Support
- Integrated DNS Client
- DHCP or Static Operation
- UDP, TCP, ARP, ICMP(ping) Support
- TCP/IP Server or Client Mode Operation
- Easy Configuration over a Network (LAN)
- RS232/ RS485
- Offline Operation Mode
- Globally Unique MAC
- 2xRelay Output
- 4xDigital Input for peripherals i.e. gates, turnstiles etc.
- RTC with Battery Backup & NTP Server Support
- TFTP & FTP Support
- Remote Firmware Update over Network
- -40 °C ... +70 °C Industrial Operation

3.1 Electrical Specifications

Parameter	Min.	Nominal	Max.
Operation Voltage	7.5 V	12 V	35 V
Power Consumption	1.6 W	2.4 W	3 W
Operation Temp.	-20 C°	~	+85 C°
CPU	ARM Cortex CPU		
External Memory	128 Byte EEPROM & 1Mbyte Flash Memory		
CPU RAM	8 KB SRAM		
Led Indicators	2xLED Onboard		
Global Unique MAC ID	Yes		
Ethernet	10BaseT, IP, PING, DHCP, UDP, TCP, ARP		
IO / Relays	2xRelay; 4xInput		
RS485	Yes* (RS232)		
RS232	Yes		
RTC with Backup Battery	Yes		

3.2 MCR04G Mechanical View & Dimensions

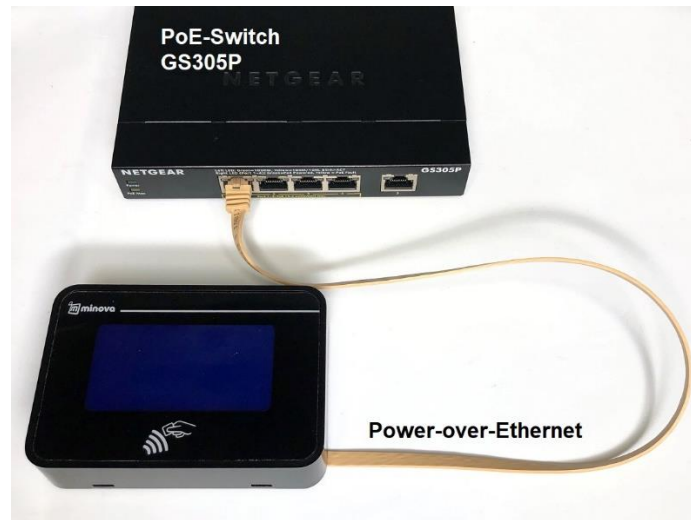


Main Connector	
1	RS485-A
2	RELAY1-NC
3	RS485-B
4	RELAY1-NO
5	COM1-GND (RS232)
6	RELAY1-COM
7	COM1-RXD (RS232)
8	RELAY2-NC
9	COM1-TXD (RS232)
10	RELAY2-NO
11	COM2-RX (empty in GSM version)
12	RELAY2-COM
13	COM2-TX (empty in GSM version)
14	+5V OUT
15	POWER GND
16	EXT_IN1
17	POWER INPUT +12V nominal
18	EXT_IN0

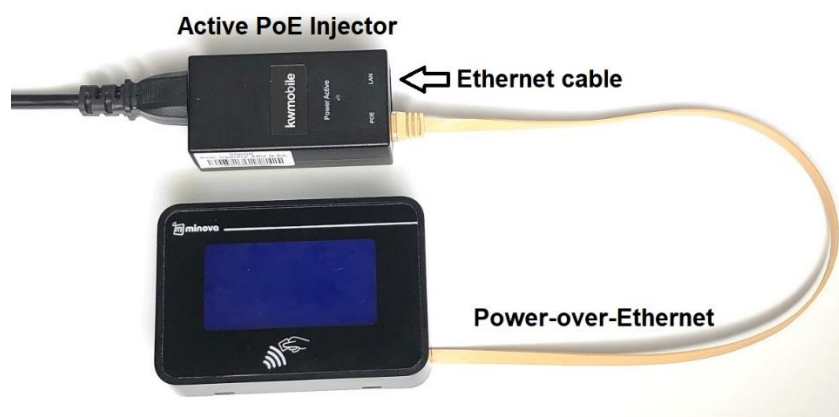
3.3 Powering the MCR04G Reader

The MCR04G is PoE enabled and can be connected directly to a PoE-Enabled switch.

PoE-Switch



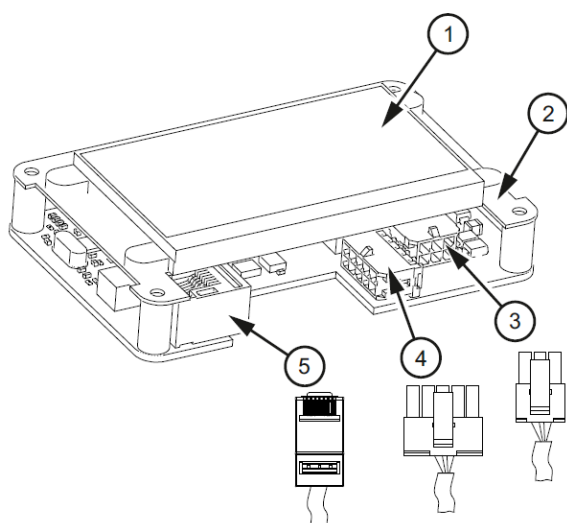
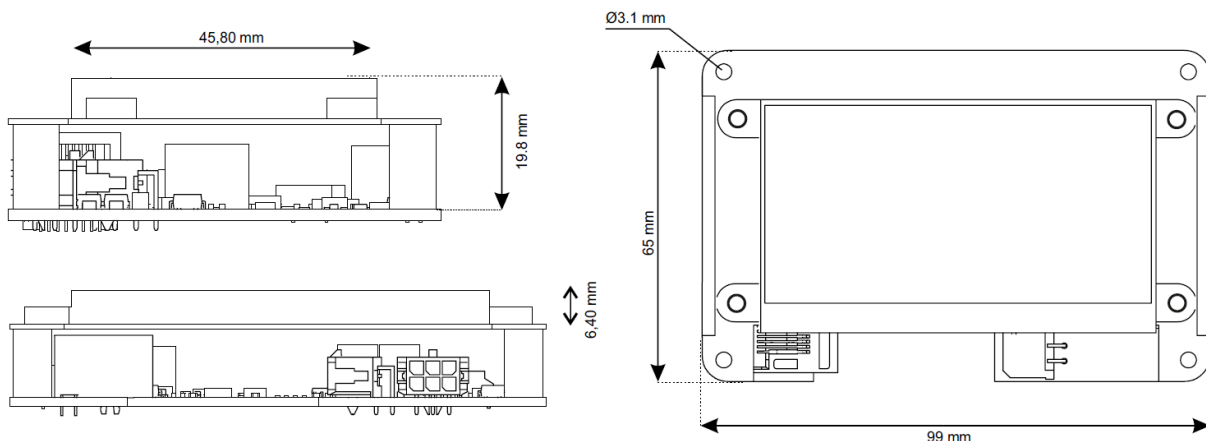
PoE-Injector



Or via main connector Pin17 (V+ red) and Pin15 (GND black)

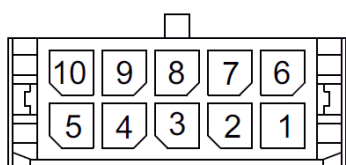


3.4 MCR04 Mechanical View & Dimensions



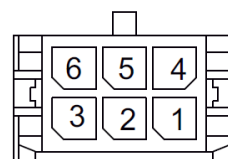
- ① LCD
- ② Antenna
- ③ Digital Inputs Connector
- ④ Relay & Power & Comm. Connector
- ⑤ Ethernet (Network) Connector

Relay Connector Pinning



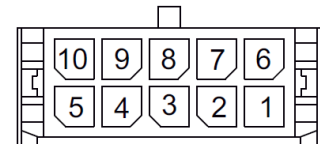
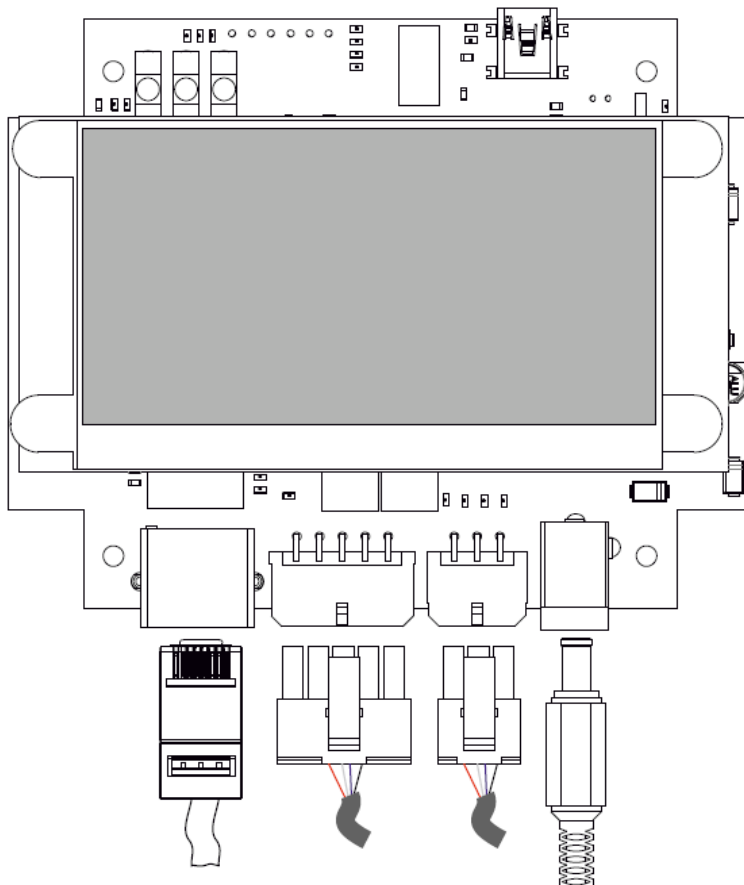
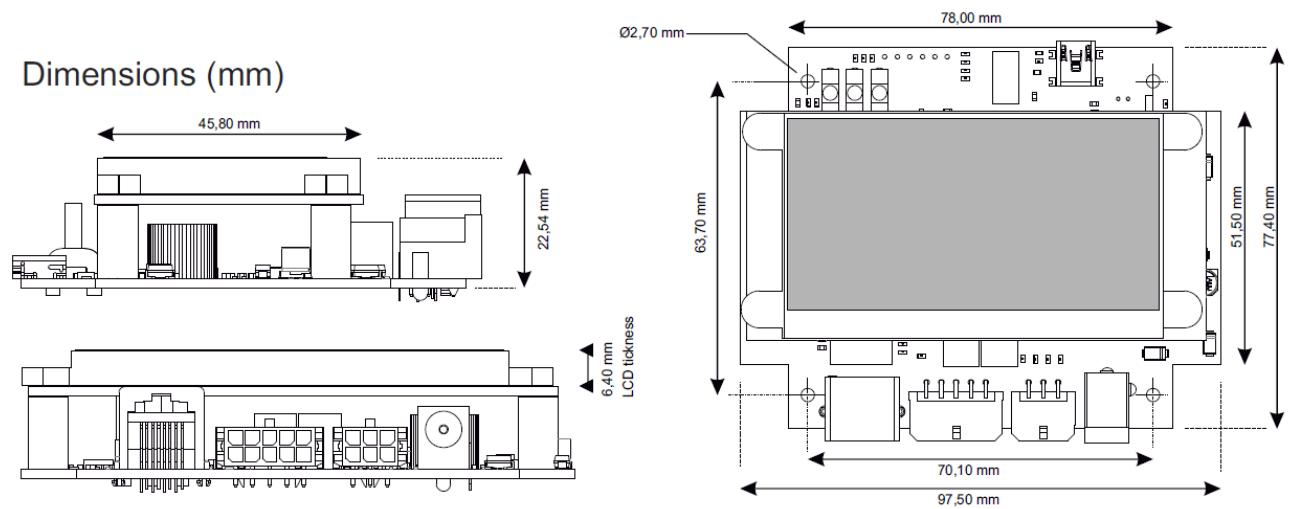
- 1 RS232 RX or RS485 B - orange
- 2 RS232 TX or RS485 A - violet
- 3 RELAY 1 NO - green
- 4 RELAY 1 NC - green
- 5 RELAY 1 COM - green
- 6 GND - brown
- 7 GND - black
- 8 DC IN - red
- 9 RELAY 2 COM - blue
- 10 RELAY 2 NO/NC - blue

Input Connector Pinning

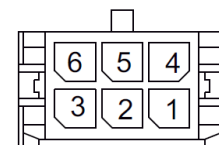


- 1 GND - black
- 2 INPUT X3 - blue
- 3 INPUT X1 - green
- 4 +5V OUT - red
- 5 INPUT X2 - brown
- 6 INPUT X0 - violet

3.5 MCR02 Mechanical View & Dimensions



- 1 DC IN
- 2 GND
- 3 ROLE 1 NO
- 4 GND
- 5 RS232 TX or RS485 A
- 6 ROLE 2 NO or NC (Preset)
- 7 ROLE 2 COM
- 8 ROLE 1 NC
- 9 ROLE1 COM
- 10 RS232 RX or RS485 B

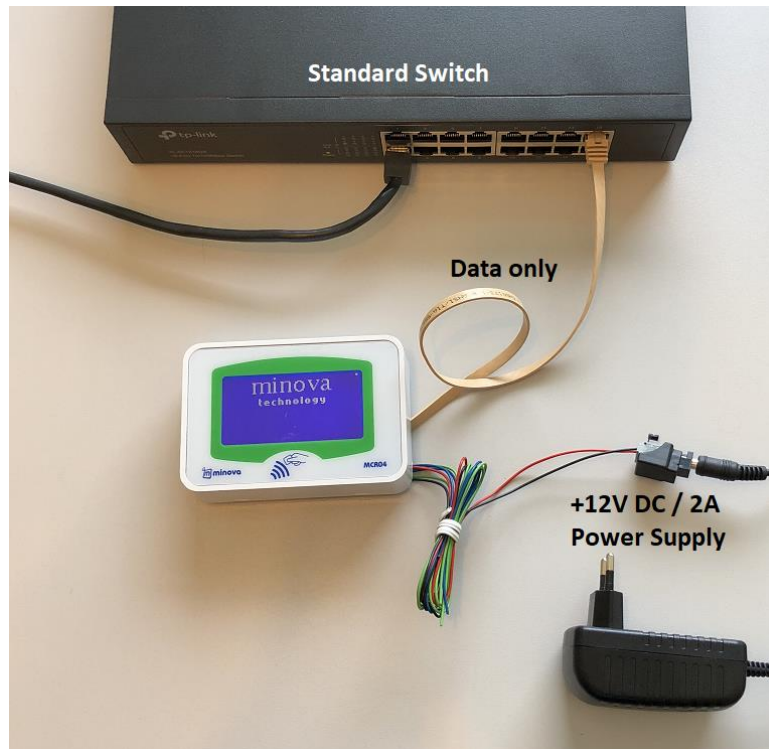


- 1 GND
- 2 INPUT X3
- 3 INPUT X1
- 4 5V Out
- 5 INPUT X2
- 6 INPUT X0

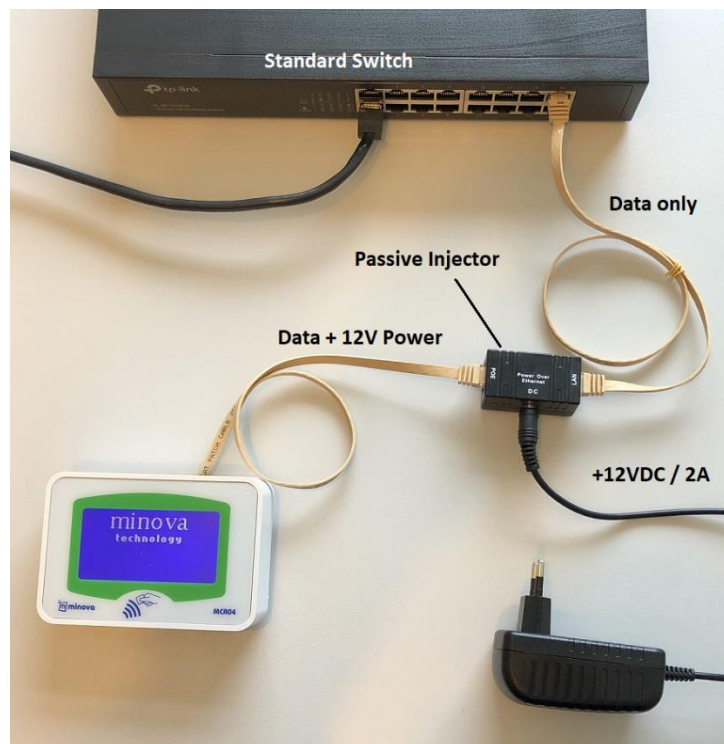
3.6 Powering the MCR02/04 Reader

Ethernet cable and +12VDC power input is required to operate the reader.

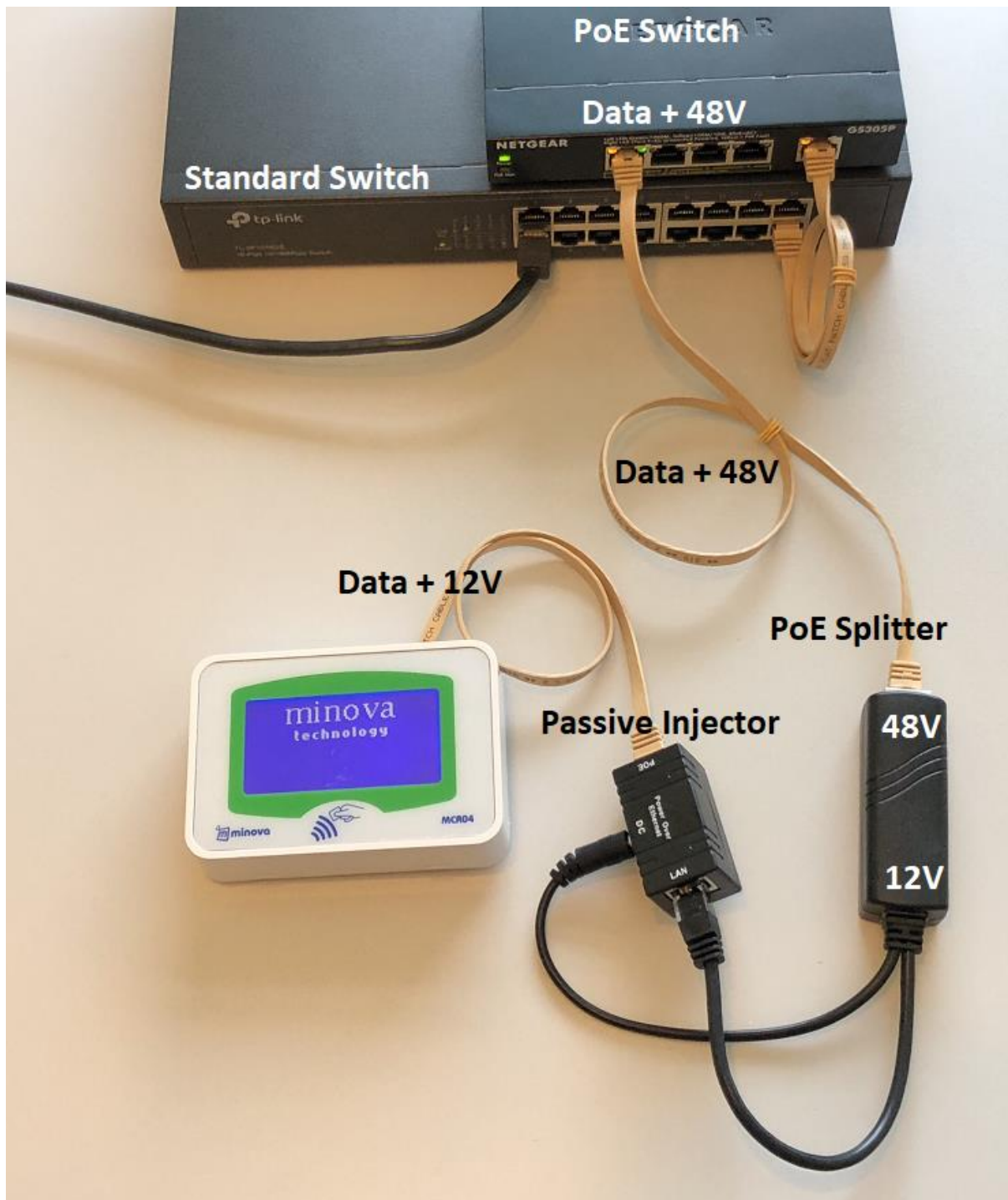
3.7 Standard Configuration



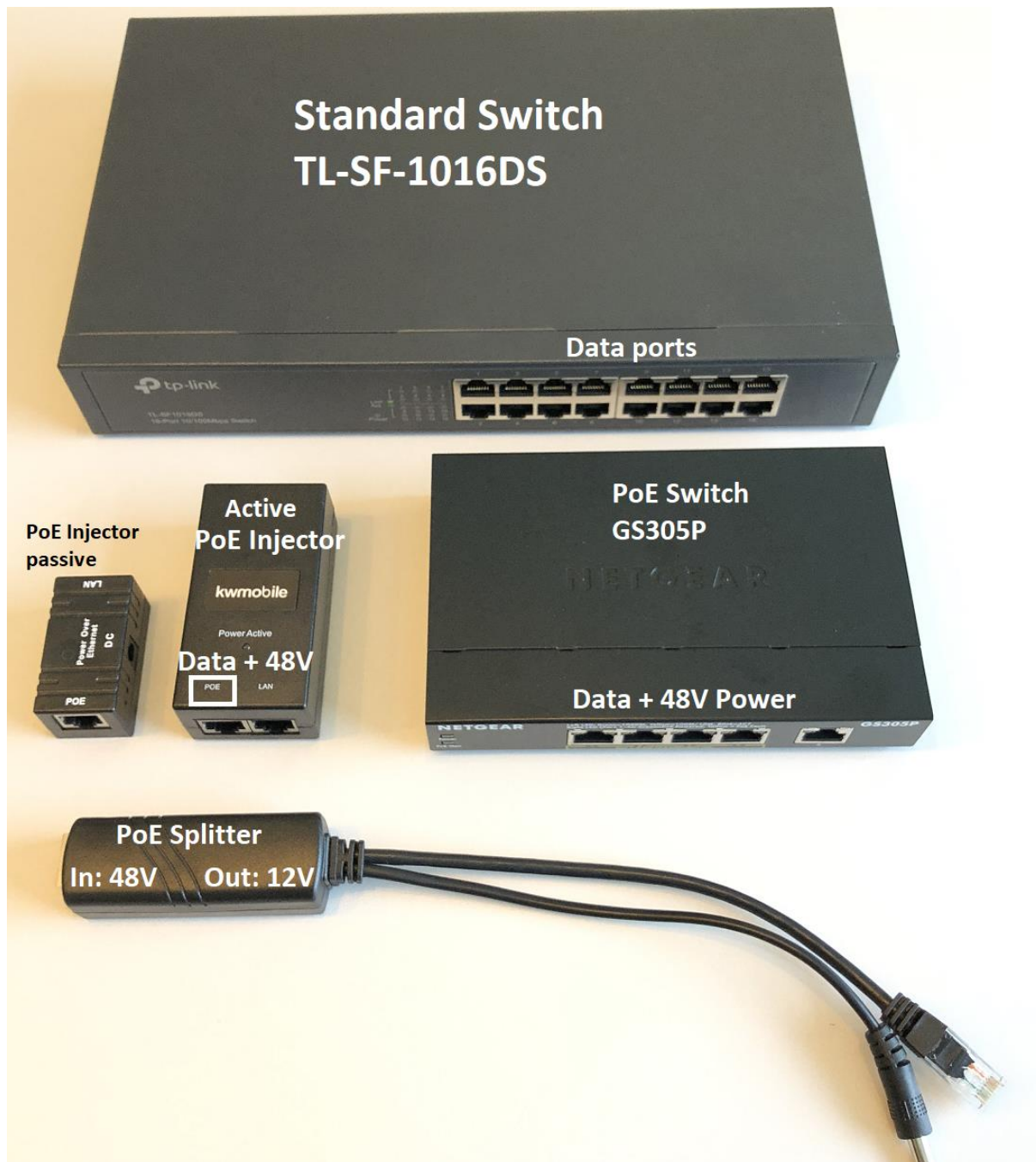
3.8 Ethernet Powered (Passive PoE-Injector)



3.9 Ethernet Powered (Active PoE-Splitter)



3.10 Possible Device Alternatives



4 Operating Modes & Setup

4.1 Server & Client Protocols

MCR0x Ethernet Terminals can be used in either Client or Server. In client mode the terminal connect to a remote server that it listening a TCP/UDP port. Server may accept multiple connections. MCR0x Terminals can be used as Server. The terminal listens own port and can accept a connection request from outside. In this case terminal's IP number is to be static. It depends on the application whether the terminal is in Client or Server mode.

4.1.1 TCP/IP Client Mode Operation

When the terminal is set to operate in client mode it tries to connect a remote server IP & Port set in configuration.

4.1.2 TCP/IP Server Mode Operation

When the terminal is set to operate in server mode it listens own TCP port to accept outcoming request from other clients.

4.2 Terminal Setup & Settings

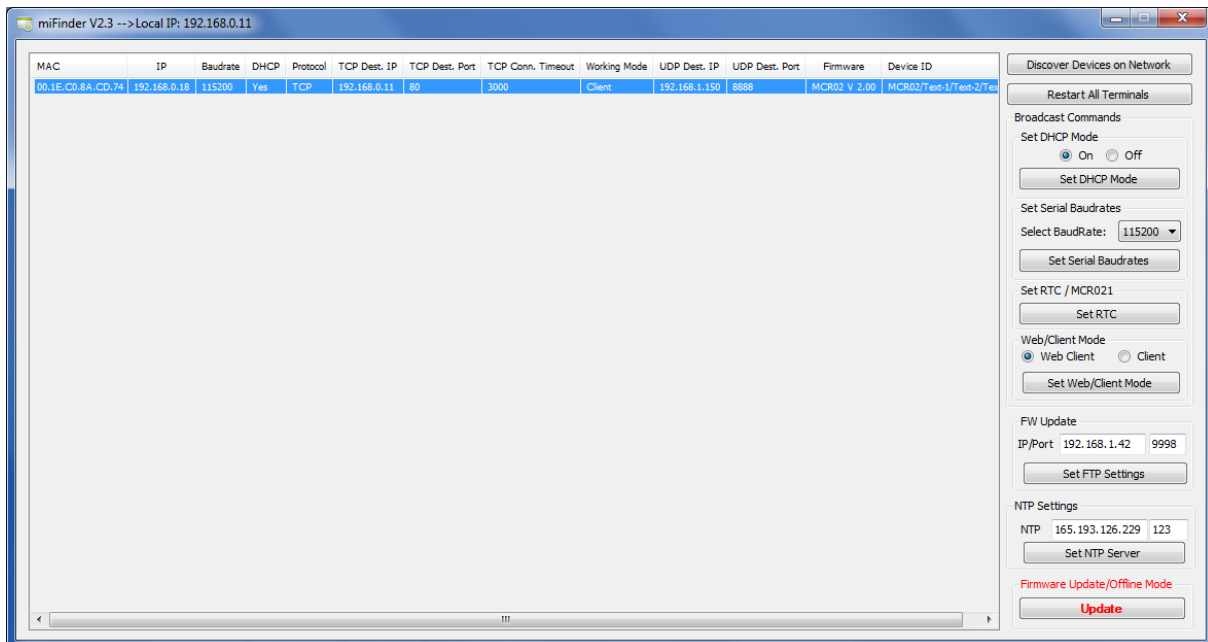
The terminal can be configured on a network (LAN). To start setup terminal must be in a network that supports DHCP. The terminal needs to acquire an IP from a DHCP server on your network. Configuration is made through and UDP protocol so it advisable to use a firewall free network. Most of the firewalls filter UDP.

For the first time setup you can use miFinder software. miFinder can discover all terminals on your network. After MCR0x is up i.e. (after gained an IP from your network) you can use miFinder. It is also advisable to turn off any firewall & antivirus software before running miFinder. As stated before, firewalls on PC may prevent to discover the network.

4.3 miFinder Configuration Software

Using miFinder you can set various parameters related to terminals. Some parameters are specific to each terminal and some parameters are global to all terminals. After all setup, your device is listed or discovered as given below.

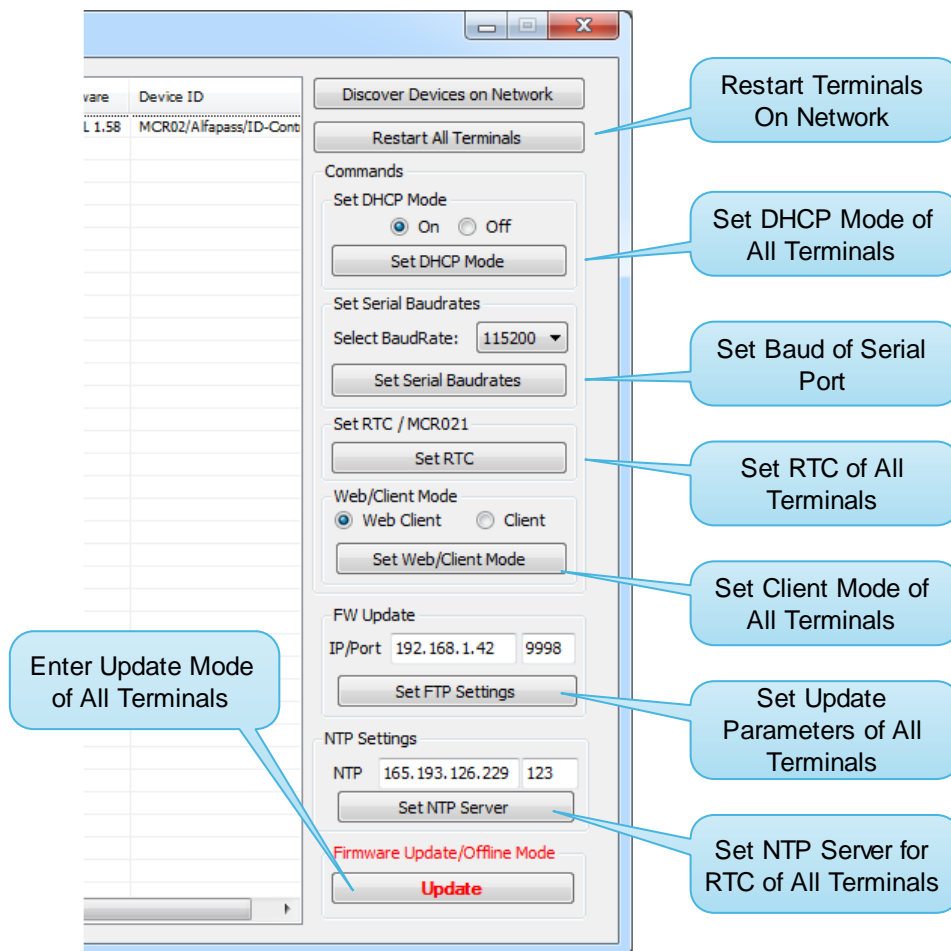
If your terminal is not discovered, press Discover button again.



miFinder Main Screen

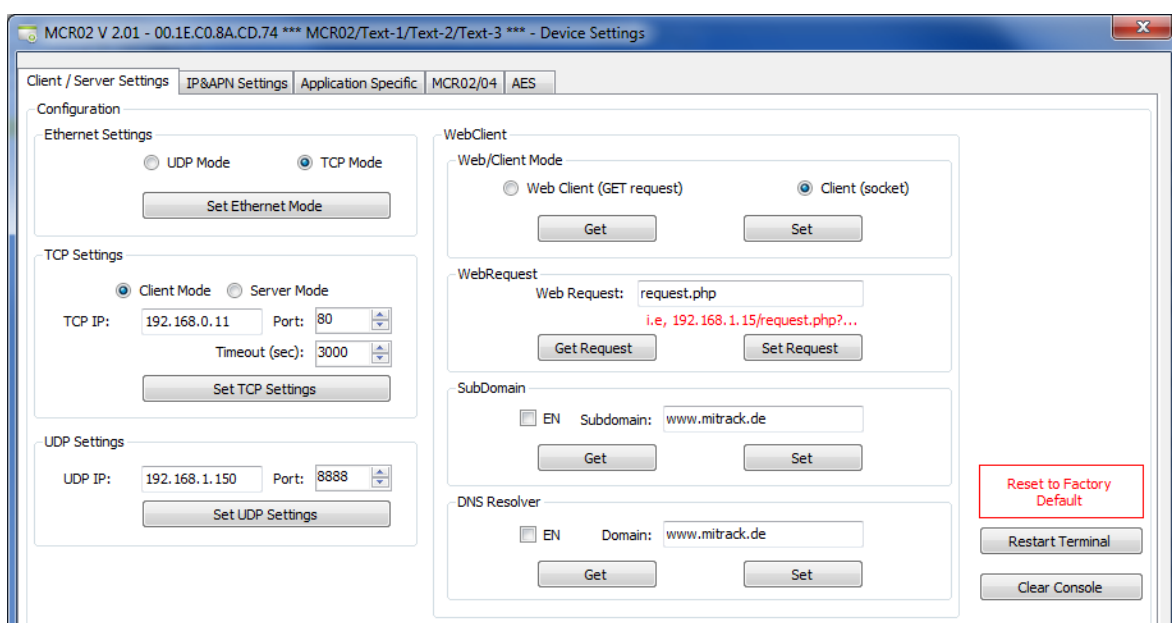
In main window of miFinder you can the following parameters

- Restart or Reset all terminals connected to network.
- Setting DHCP parameter of all terminals connected to network.
- Setting the baud-rate of the RS232 port.
- Setting the Real Time Clock of all terminals connected to network.
- Setting the Client mode type: Web or Normal Socket Client of all terminals connected to network.
- Setting the remote parameters or firmware update of all terminals connected to network.
- Setting the remote NTP server parameters of all terminals connected to network. NTP server can be used to set automatically if the device can access internet (www).
- Enter to update mode to check firmware update of all terminals connected to network.



miFinder main window view

To enter a detailed setup of a particular terminal select a device from the list and double click to see a particular terminal setting window in miFinder. This window gives you a detailed setup of each terminal. Please note that these settings are specific to each terminal. Below given a snapshot of detailed settings window of miFinder.



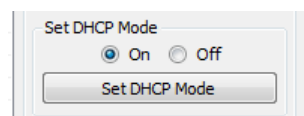
miFinder Terminal Setting Window

This setting window gives you to:

- Set the terminal IP static or dynamic
- Set protocol type of operation of the terminal: UDP or TCP
- Set UDP remote ip & port
- Set TCP operation mode: Client or Server
- Set TCP remote ip and server port
- Set remote request file with GET in Web-Client mode
- Set / Clear Relays to test
- Give a alias name to terminal (i.e. MCR_Gate1 etc.)
- Set & View LCD Screen Texts (App. Specific section)
- Set RTC synchronized with PC clock.
- Reset to factory default configuration of selected terminal.
- View Firmware version of the terminal.

4.3.1 Automatic IP (DHCP) Mode

In miFinder’s main screen, in Set DHCP Mode section, select ON and press Set DHCP Mode button. Then all terminals restart and try to access a DHCP server to get an IP address from your network. Please note that your network must have a DHCP enabled management device.



DHCP Mode Setting

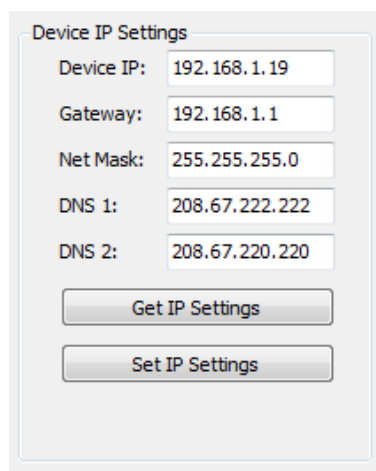
4.3.2 Constant / Static IP Mode

The terminal is set up with the following IP parameters for static operation at factory.

Parameter	Value
IP Address	192.168.1.100
Gateway Address	192.168.1.1
Net Mask	255.255.255.0
Primary DNS	192.168.1.1
Secondary DNS	192.168.1.1

However, most of the terminals manufactured are set to operate in DHCP mode. Static IP mode is not preferred for mass productions. The default setting for all terminals is DHCP.

To set a terminal to be run in static IP mode, in miFinder’s main window enter the desired terminal’s settings screen. Then enter your desired IP, GW, Mask and DNS values in Device IP Settings section.



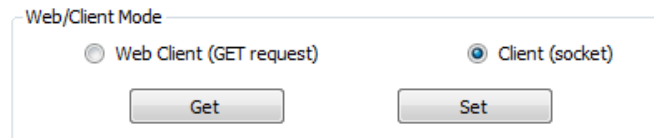
IP Parameters Settings Section

Note that, after opening settings screen, this section gives your terminal's current IP parameters. After entering the values as above figure, then press Set IP Settings button. Then the terminal restarts again.

The last step is to set DHCP mode to OFF in main window of miFinder as given in above figure. The terminal restarts again in Static IP mode. Please note that you can skip this step if your terminal is already operating in static IP mode.

4.3.3 Client and Web Client Modes of Operation

Any MCR0x terminal can connect to web server or server as client. The terminal's client mode of operation can be altered in main screen of miFinder as in below figure.

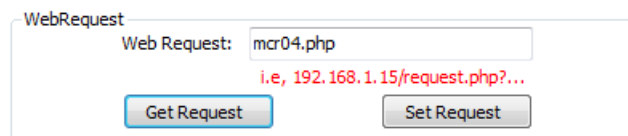


Web Client or Normal Client Mode Setting

When a contactless card is detected by the terminal, it tries to send card's UID to server as follows:

Operation Type	Example Terminal Request
Web Client	<i>GET /request.php?devID= MCR02-ABCD&uid=F0C189A5</i>
Client (Socket)	<i>MCR02-ABCD,UID= F0C189A5</i>

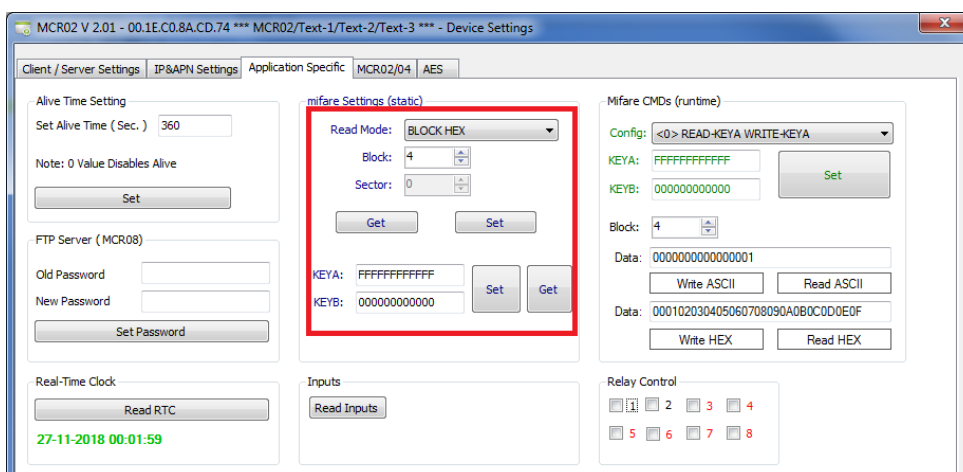
It is seen that the terminal tries to send data to a web-server by requesting a PHP file. You can also change this request in miFinder's setting window.



Http request file name for Web-Client Mode

4.3.4 BLOCK/SECTOR Auto-Read

The reader can be configured to read block or sector data automatically from a MIFARE card.



Example: *MCR02-8ACD74,UID=26E400BE,DATA=00000000000000000000000000000000,IO=0F*

4.3.5 Message Formats from Server to Terminal

The message format from server to terminal is given by the following syntax.

<Device ID>,<CMD1;parameter1;...ParameterN>,<CMD2;parameter1;...;ParameterN>,...

This packet can be sent by a specific TCP server via socket_send API's or simple echo statements defined in a web server protocols.

Command	Description	Parameter/Example
LCDCLR	Clears LCD	None
LCDSET	Write Text to LCD	Left;Top;Font_Type;Text Ex: LCDSET;0;0;0;Hello World
LCDLOCK	Locks the display	None
LCDUNLOCK	Releases the display	None
MSG_TEXT	Update line 3 default text parameter in the configuration	Ex: MSG_TEXT;Active (Change default text)
DISP=	Update line 3 in runtime (remains until reboot)	Ex: DISP=Active (Display a new text)
BUZZER	Activate Buzzer	BUZZER;DelayMs,beepTimes Ex: BUZZER;300;1 (300 msec. period with 1 time Beep)
ALIVE	Alive message is sent by the Terminal periodically	If desired the server can send commands as reply.
RELAY1=xx	Energize Relay-1 by Delay in Ms.	XX Delay in Milliseconds. The Relay is ON with XX Delay.
RELAY2=xx	Energize Relay-2 by Delay in Ms.	XX Delay in Milliseconds. The Relay is ON with XX Delay.
RELAY1=ON RELAY1=OFF	Relay-1 ON or OFF all the time.	ON / OFF
RELAY2=ON RELAY2=OFF	Relay-2 ON or OFF all the time.	ON / OFF
TSYNC=UNIX_TIME	Set Terminal's RTC from server.	UNIX_TIME This is a Unix time stamp value. Ex: TSYNC=256984235
WLIST_ADD	White list add UID Type UID Start date/time End date/time	TYPE;UID;START;END TYPE=0 UID only, T=1 UID with date/time control UID= UID in HEX (4 or 7 bytes) START=Unix time stamp END= Unix time stamp Ex: WLIST_ADD;1;FA1025AA;1420074061;1422842522 Terminal answer: WLIST_ADD,ACK
WLIST_REM	White list remove UID	UID Ex: WLIST_REM; FA1025AA Terminal answer: WLIST_REM,ACK
WLIST_CLR	Clear white list	NONE Terminal answer: WLIST_CLR,ACK
WLIST_GET=xx	Read UID form list	INDEX Ex: WLIST_GET=12 Terminal answer: WLIST_GET,TYPE,UID,START,END or WLIST_GET,NAK (index not exists)
LIST_INFO	Get list counters	NONE Terminal answer: LIST_INFO,WLIST_COUNT ,WLIST_CHKSUM,BLIST_COUNT,ACTIVITY_COUNT
ACT_CLR	Clear activity file	NONE Terminal answer: ACT_CLR,ACK
ACT_GET=	Read activity record	INDEX Ex: ACT_GET=12 Terminal answer:

		ACT_GET,TYPE,INF,UID,TIMESTAMP or ACT_GET,NAK (index not exists)
ACK_STR	Set offline ACK string Max. 120 Bytes long	Command string Ex: ACK_STR;RELAY1=1500,BUZZER;50;2
NAK_STR	Set offline NAK string Max. 120 Bytes long	Command string Ex: ACK_STR;BUZZER;500;1, LCDCLR,LCDSET;10;20;2;DENIED;
INPUTS	Return inputs	NONE Terminal answer: INPUTS,INPUT0,INPUT1,INPUT2,INPUT3 Ex: INPUTS,IO0=0,IO1=0,IO2=0,IO3=1
INPO_STR	Set input 0 string	Command string Ex: INPO_STR;LCDCLR,LCDSET;7;25;3;DO NOT DISTURB,LCDLOCK
INP1_STR	Set input 1 string	Command string Ex: INP1_STR;LCDCLR,LCDSET;7;25;3;EMPTY,LCD LOCK
STR_GET	Get stored strings 0: ACK, 1: NACK, 2: INPO, 3: INP2 8: CONFIG	INDEX Terminal answer: Command String Ex: STR_GET=0;
BARCODE	Activate and scan	NONE Terminal answer: ACK,BAR_CODE,INPUTS
GET_UID	Get last UID	NONE Terminal answer: UID in HEX format
LOADKEYS;TYPE;KEYA;KEYB	Load mifare keys	LOADKEYS;0;A0A1A2A3A4A5; B0B1B2B3B4B5
BLOCKREAD;BLOCKNR BLOCKREADX;BLOCKNR	Read 16 bytes mifare block Read 16 bytes in HEX mode	BLOCKREAD;2 Answer: BLOCKDATA=Test string 1 Answer: BLOCKDATAx=000102030405060708090A0B 0C0D0E0F Answer: NAK block authentication error
BLOCKWRITE;BLOCKNR;DATA BLOCKWRITEX;BLOCKNR;DATA	Write max 16 bytes mifare block Write max 16 bytes in HEX mode	BLOCKWRITE;2;Test BLOCKWRITEx;2;000102030405..
FORMATSECTOR;SECTORNR;DATA	Format a sector	FORMATSECTOR;1; FFFFFFFFFFFFFFFF078069FFFFFFFFFFFF
SECTORREAD;SECTORNR SECTORREADX;SECTORNR	Read 48 bytes of sector data Read 48 bytes in HEX mode	SECTORREAD;1 SECTORREADX;1
SECTORWRITE;SECTORNR;DATA SECTORWRITEX;SECTORNR;DATA	Write max 48 bytes of sector data Write max 48 bytes in HEX mode	SECTORWRITE;1;MAX MUSTERMAN MUSTERSTRASSE 2 MUSTERSTADT
CAPDU;APDU[0]..APDU[n]	Send APDU command (DESFire or T=CL card)	CAPDU;00A404000E325041592E5359532E444446303100 Answer: RAPDU=06675041259000
CONFIG_ERASE	Erases the configuration sector of the flash memory	CONFIG_ERASE
DELAY;MS	Wait command for a defined time	DELAY;1000 (do nothing 1s long)
TRST	Terminal reset	Resets the reader

4.3.6 Example Operation

The Terminal sends the following to Server:

MCR02-8AC64C,UID=1255CCF0,IO=0F

The Server may send the following to Terminal:

MCR02-8AC64C,BUZZER;500;1,LCDCLR,LCDSET;0;0;0;Test1,LCDCLR,LCDSET;0;10;0;Hello World!
or MCR02-8AC64C,BUZZER;500;1,LCDCLR,LCDSET;0;0;0;Test1,LCDCLR,LCDSET;0;10;0;Hello World!,RELAY1=500

Web-Client Mode Message:

GET /request.php?devID=MCR02-8ACD74&uid=1255CCF0&block=0000000000000002&io=0F\r\n\r\n

Web-Client Mode Alive Message:

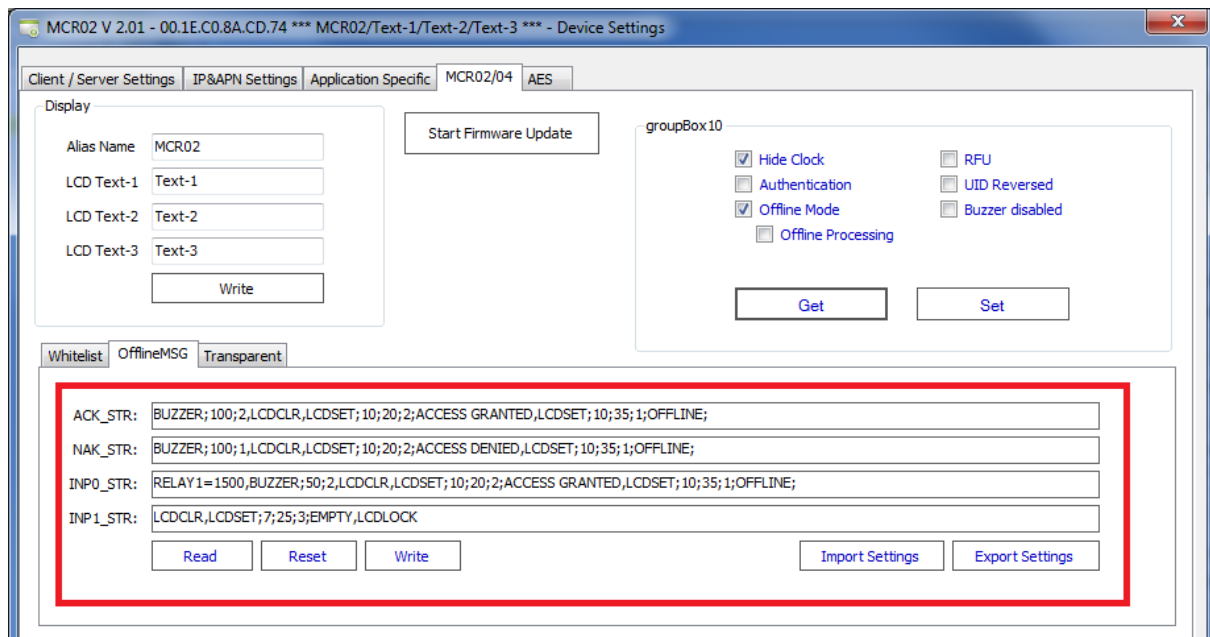
GET /request.php?devID=MCR02-8ACD74&cmd=ALIVE&io=0F\r\n\r\n

4.3.7 Offline Mode of Operation

Offline mode is automatically activated as soon as the server connection is broken or the Ethernet cable was disconnected. To be sure that this mode works correctly, the following offline strings must be defined.

- ACK_STRING: Will be called in case of a card is tagged and the UID is in white list
- NAK_STRING: Will be called in case of denied card
- INP0_STR: Will be called when the input 0 is activated
- INP1_STR: Will be called when the input 1 is activated

After the server is again reachable or the Ethernet cable is reconnected, the reader switches to online mode within some seconds.



Offline Configuration

Hide Clock: Removes the date-time info from the display.

Authentication: not in use

Offline Mode: Whitelist operation in case of no connection.

Offline Processing: Always whitelist operation, online mode only to download activity and upload whitelist.

UID Reversed: The UID is byte wise reversed

Buzzer disabled: Buzzer is disabled (Buzzer command still works)

Offline Whitelist and Activity File

Up to 10000 UIDs and 10000 activity records can be stored in the internal memory.

Examples to initialize the whitelist:

* Clear the white list. All stored UIDs will be deleted.

MCR02-8ACD74,WLIST_CLR

* Add an UID to the list. Type = 1, UID =E50485F2, time/control between 20.03.2011 - 20:49:57 and 20.03.2015 - 20:49:57

MCR02-8ACD74,WLIST_ADD;1;E50485F2;1300650597;1426880997

* Remove an UID from the list. UID =E50485F2

MCR02-8ACD74,WLIST_REM;3187729446

* Get the UID index 0

MCR02-8ACD74,WLIST_GET=0

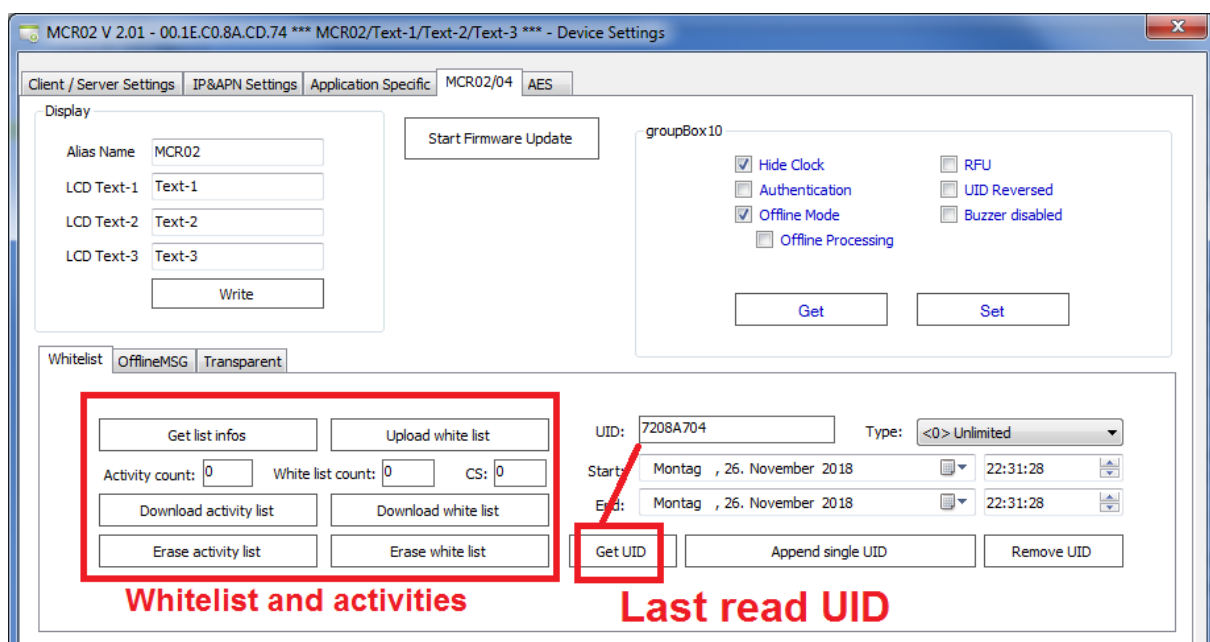
* Get list info.
MCR02-8ACD74,LIST_INFO

After this command, the UID list count, the list checksum and the activity length will be returned. The server can check the list checksum to update the complete list.

* Get an activity record.
MCR02-8ACD74,ACT_GET=0

Example: MCR02-8ACD74,ACT_GET,0,0,E50485F2,1422913388
Activity type 0 (UID activity)
Activity info 0
UID E50485F2
Timestamp 02.02.2015 - 22:43:08

* Clear the activity list. All activity records will be deleted.
MCR02-8ACD74,ACT_CLR



Offline Configuration and adding manually UIDs

4.3.8 Offline examples

Activity file

MCR02-8ACD74,LIST_INFO
MCR02-8ACD74,ACT_GET=0
MCR02-8ACD74,ACT_CLR

White list

MCR02-8ACD74,WLIST_GET=0
MCR02-8ACD74,WLIST_CLR
MCR02-8ACD74,WLIST_ADD;1;E50485F2;1300650597;1426880997
MCR02-8ACD74,WLIST_REM;E50485F2

Offline strings

MCR02-8ACD74,ACK_STR;RELAY1=500,BUZZER;50;2,RELAY2=1000,LCDCLR,LCDSET;10;20;2;ACCESS GRANTED,LCDSET;10;35;1;OFFLINE;
MCR02-8ACD74,NAK_STR;BUZZER;300;1,LCDCLR,LCDSET;10;20;2;ACCESS DENIED,LCDSET;10;35;1;OFFLINE;
MCR02-8ACD74,MSG_TXT;TAG YOUR CARD
MCR02-8ACD74,INP0_STR;LCDCLR,LCDSET;7;25;3;DO NOT DISTURB,LCDLOCK
MCR02-8ACD74,INP1_STR;LCDCLR,LCDSET;7;25;3;EMPTY,LCDLOCK

4.4 Loading MIFARE Keys

The terminal needs the sector keys in order to read/write the related blocks. There are two keys (KeyA and KeyB) for each sector.

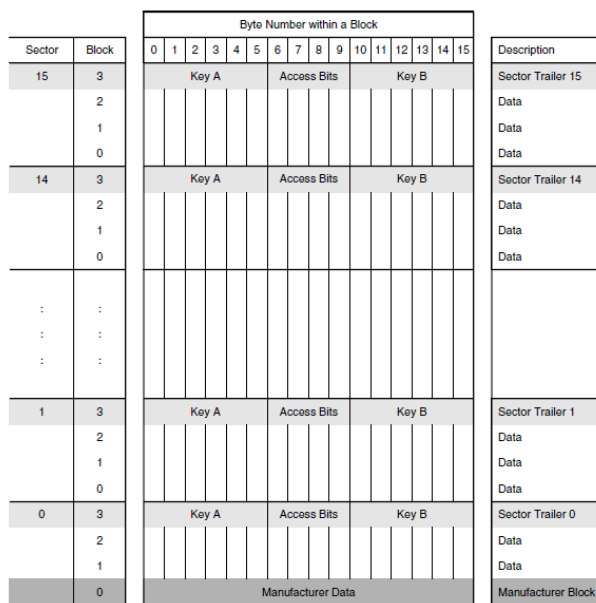
```
MCR02-8ACD74,LOADKEYS;TYPE;KEYA;KEYB
Example; MCR02-8ACD74,LOADKEYS;0;FFFFFFFFFFFF;FFFFFFFFFFFF
```

The key usage is defined in the following table.

TYPE	READ	WRITE
0	Key A	Key A
1	Key A	Key B
2	Key B	Key A
3	Key B	Key B

MIFARE Card Memory Layout

1024 x 8 bit EEPROM memory



Formatting mifare® Sectors

Blocks 3,7,11,15,...63 are sector trailer blocks and store the KEYA, KEYB and the access conditions.

The sector trailer data must be defined correctly.

```
MCR02-8ACD74,FORMATSECTOR;SECTORNR;DATA
SECTORNR = 0 to 15
DATA = KEYA-ACCESSBITS-KEYB
```

Examples:

```
MCR02-8ACD74,FORMATSECTOR;1;FFFFFFFFFFFFF078069FFFFFFFFFFFF // Transport config R&W with KEYA
MCR02-8ACD74,FORMATSECTOR;1;FFFFFFFFFFFFF7878800FFFFFFFFFFFF // R/W-Blocks read: KEYA, write: KEYB
MCR02-8ACD74,FORMATSECTOR;1;FFFFFFFFFFFFF08778F00FFFFFFFFFFFF // INC/DEC-Blocks
MCR02-8ACD74,FORMATSECTOR;1;FFFFFFFFFFFFF7F00F800FFFFFFFFFFFF // DEC-Only-Blocks
MCR02-8ACD74,FORMATSECTOR;1;FFFFFFFFFFFFF68778900FFFFFFFFFFFF // B0;INC/DEC, B1-2 R/W blocks
```

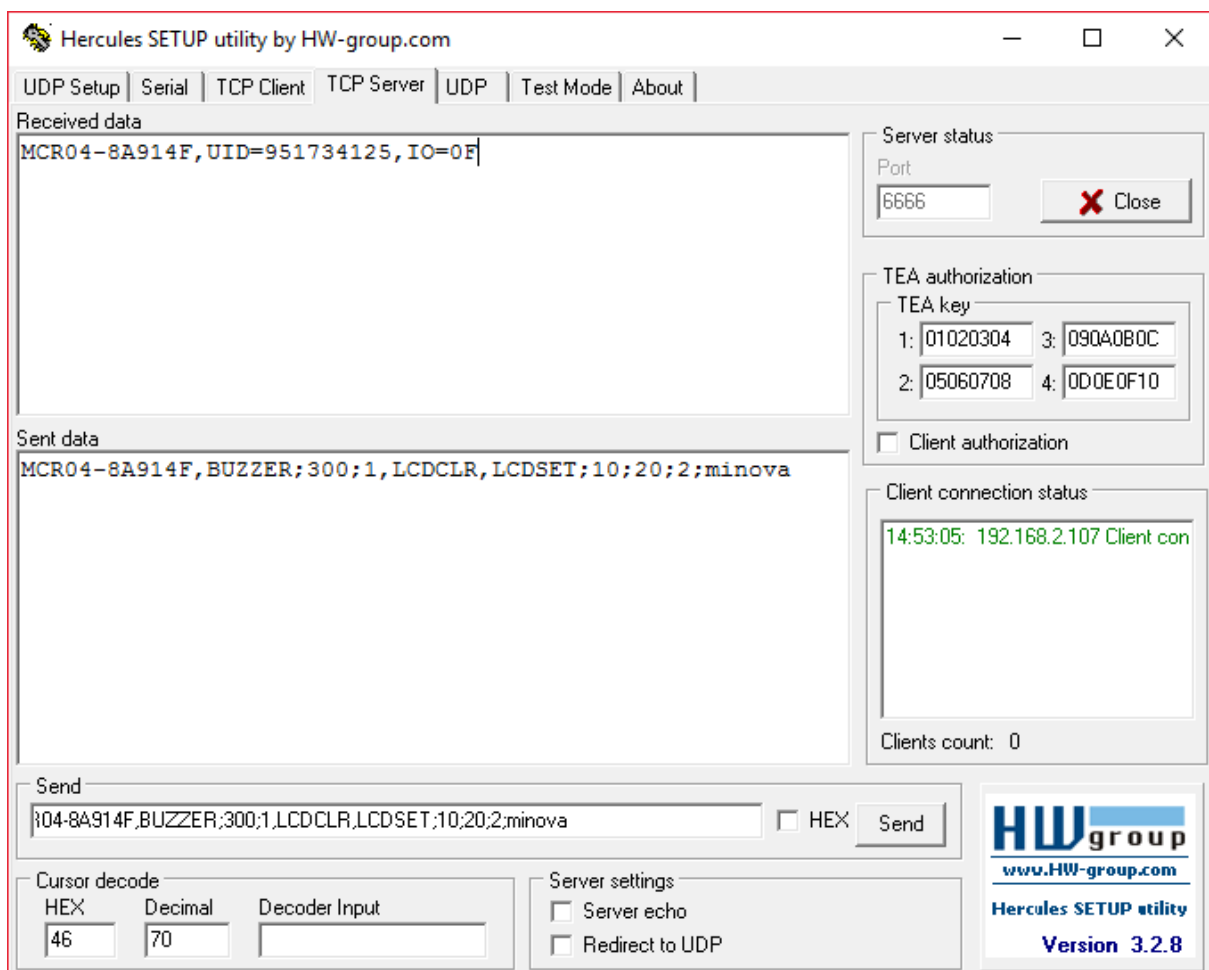
Reading/Writing mifare® Blocks

```
MCR02-D59505,LOADKEYS;0;FFFFFFFFFFFF;FFFFFFFFFFFF,BLOCKREADX;1 // Block read with loadkey
MCR02-D59505,BLOCKDATAx=48414c4c4f20202020202020202020 // Blockread answer
// Blockwrite with loadkey
MCR02-D59505,LOADKEYS;0;FFFFFFFFFFFF;FFFFFFFFFFFF,BLOCKWRITEX;1;000102030405060708090A0B0C0D0E0F
MCR02-D59505,ACK // Blockwrite ok
```


5 Test Connection with Hercules

Hercules Setup Utility can be used to test the terminals behavior.

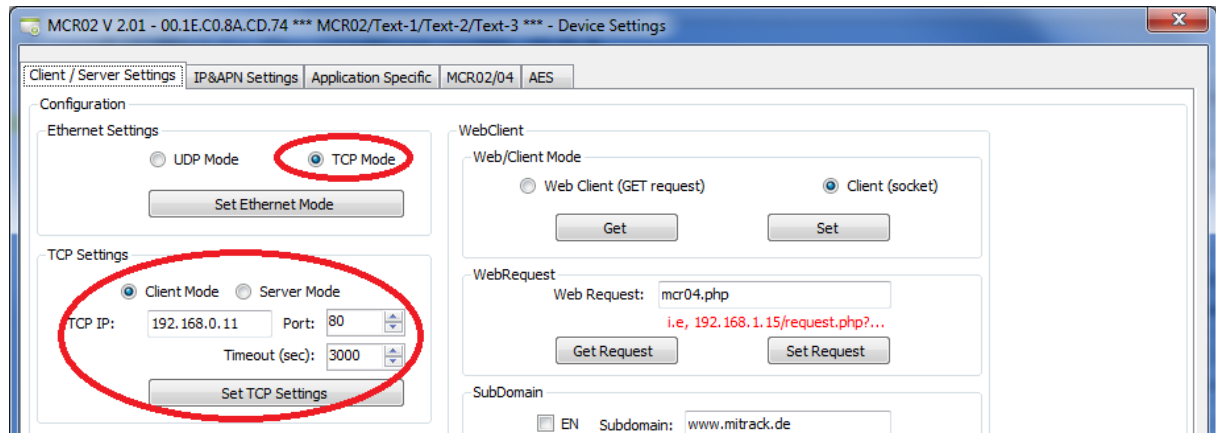
- Select TCP Server and enter the Terminals port number
- Click on **Listen**
- The terminal will connect automatically as seen in the connection status
- After presenting a card, the message will be displayed in the **Received data** window
- Enter the response message and send to the terminal. The device ID must be the same in the received and sent data
- As the TCP connection is open, we can send commands directly to the terminal



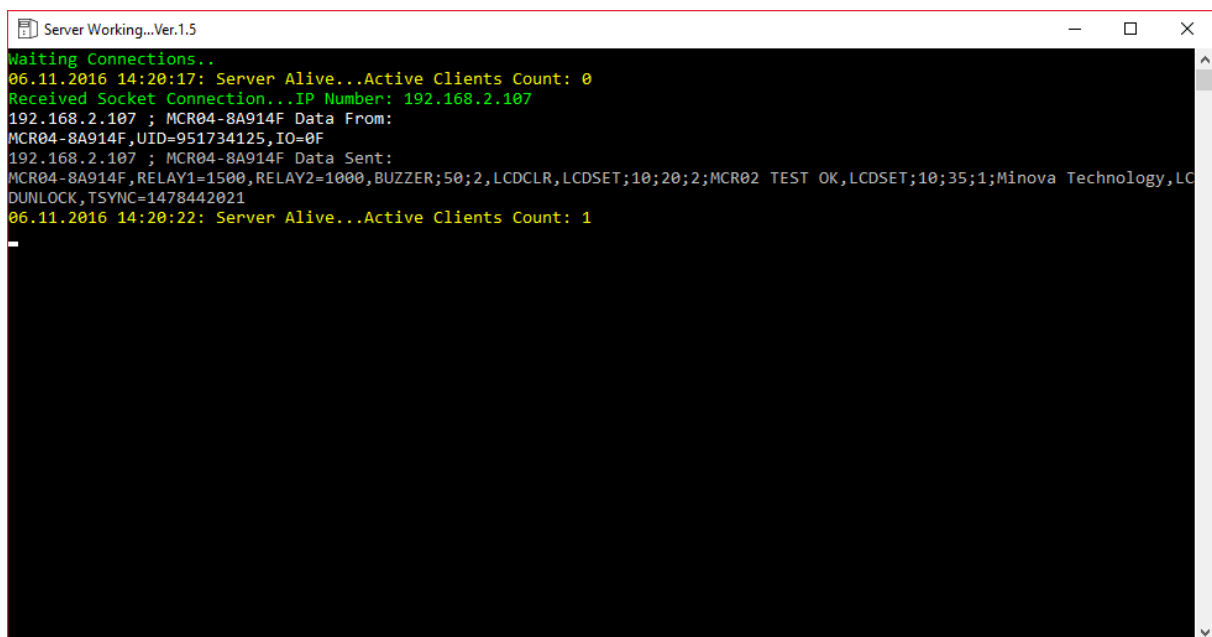
6 Example Operation with GSA

The **GSA_Testserver.exe** can be used to test the server connection. More than one terminal can connect to this multi-thread server application.

- Set your servers (PC) TCP IP and port (use same port in Updater.ini file)



- Run the **GSA_Testserver.exe** application and wait until the terminal is connected
- Present a contactless card to the terminal



The Terminal sends the following to Server:

MCR04-8A914F,UID=1E2C8E94

The Server may send the following to Terminal:

To approve:

MCR04-8A914F,RELAY1=1500,BUZZER;50;2,LCDCLR,LCDSET;10;20;2;ACCESS GRANTED,LCDSET;10;35;1;Minova Technology,TSYNC=1475792451

To deny:

MCR04-8A914F,BUZZER;500;1,LCDCLR,LCDSET;10;20;2;ACCESS DENIED,LCDSET;10;35;1;Minova Technology,TSYNC=1475792451

The server application adds to each response the TSYNC command with the actual Unixtime. This way the RTC is always synchronized with the server.

The source code of this server project is included in the SDK.

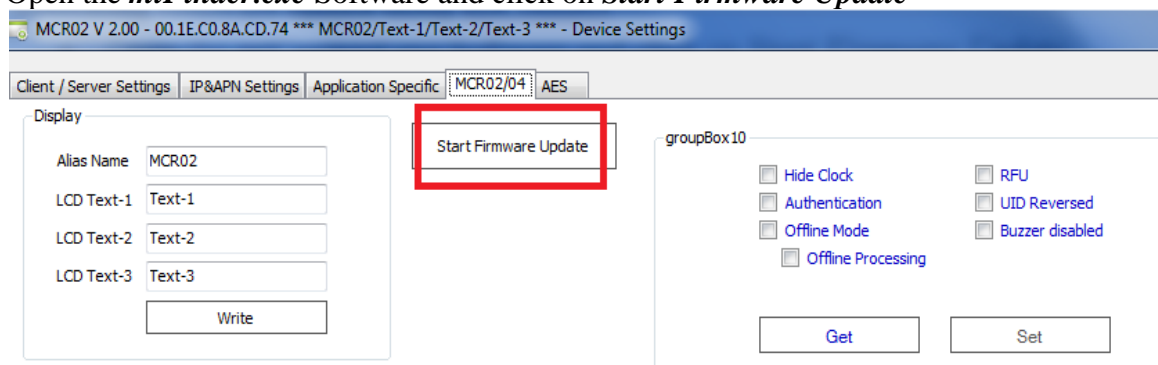
7 Firmware Update (MCR02/04 only)

We will describe the basic steps to update/load/modify or program a new firmware for the MCR0X terminal family.

7.1 Firmware Update via Ethernet

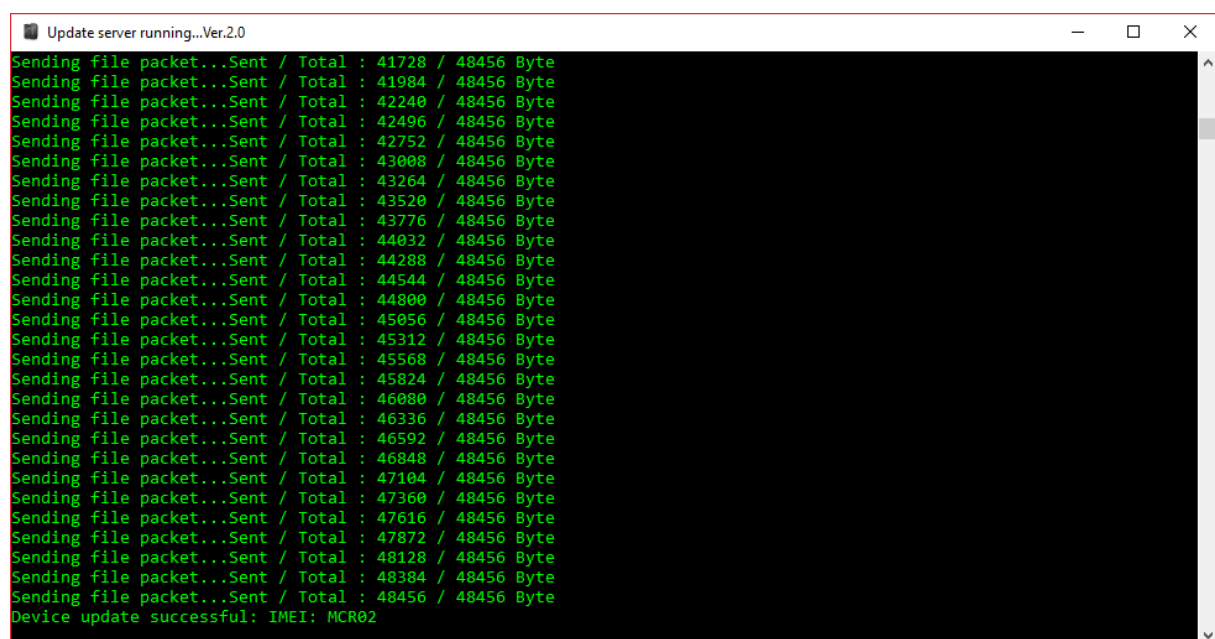
To update the firmware over the network, please do the followings.

- Run the RTU-Updater_2_0.exe
- Open the *miFinder.exe* Software and click on *Start Firmware Update*



In this case, the IP of your host will be set and the reader will be reset automatically

The reader will restart and download and activate the new firmware



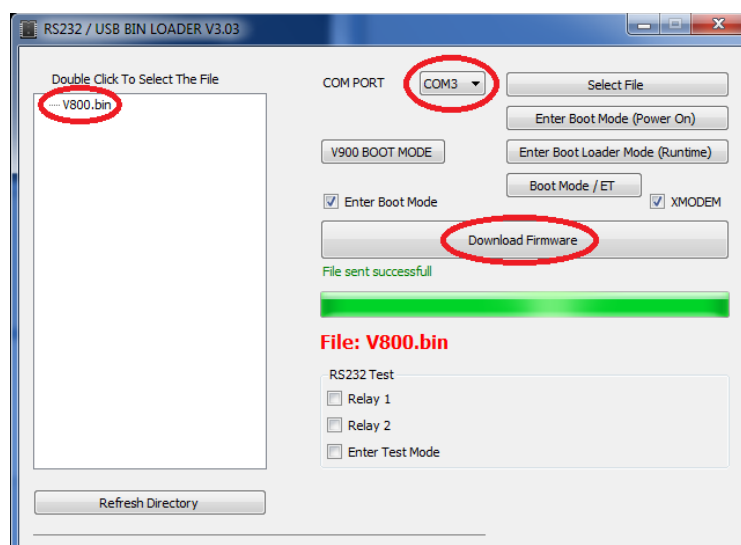
7.2 Firmware Update via RS232

7.2.1 Requirements

- RS232 download cable
- USB – Serial converter if PC does not have a serial port
- PC with Windows 7 or newer Windows OS
- RTU-FW-Downloader.exe program (.NET framework is required to run this program)

7.2.2 Update Sequence

- Connect the RS232 download cable supplied with the terminal between COM1 port of the terminal and com port of the PC.
- You can use an USB-Serial converter if PC does not have any serial port.
- Run the **RTU-FW-Downloader.exe**



- Select the bin file
- Select the **COM PORT**
- Click on **Download Firmware**
- The new firmware will be programmed and started automatically

7.2.3 Firmware Recovery via USB-Adapter

- Connect the USB – TTL adapter as below and update the firmware with the RTU-FW-Downloader.exe

